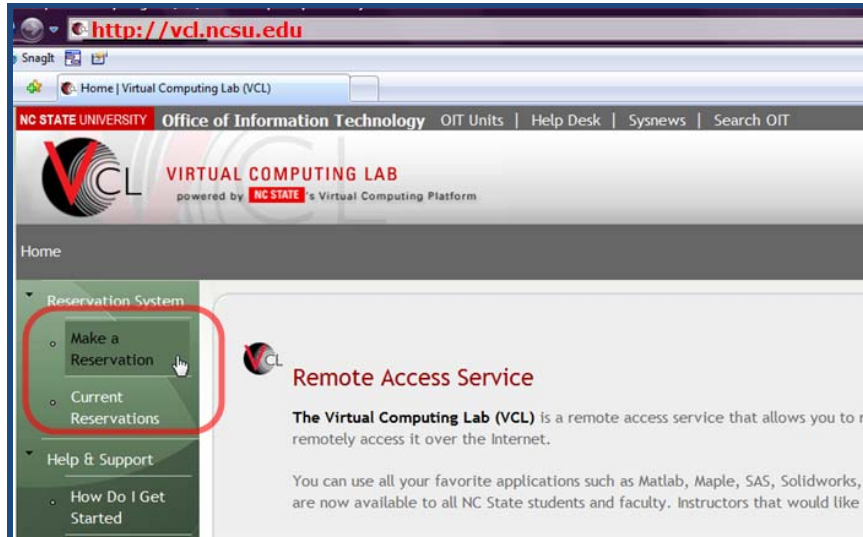


Using the VCL (Virtual Computing Lab) at NCSU Date: Jan 2009

Log in to VCL

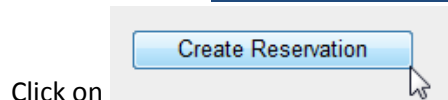
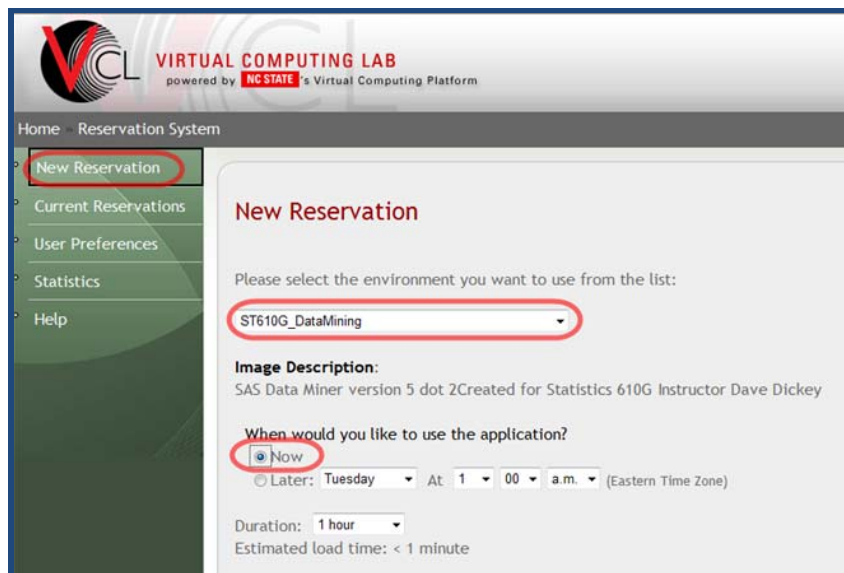
- (1) Log onto the system as usual and launch a browser (Mozilla, e.g.)
- (2) Go to vcl.ncsu.edu in your browser
- (3) Click "Make a Reservation" (or "Current Reservations")



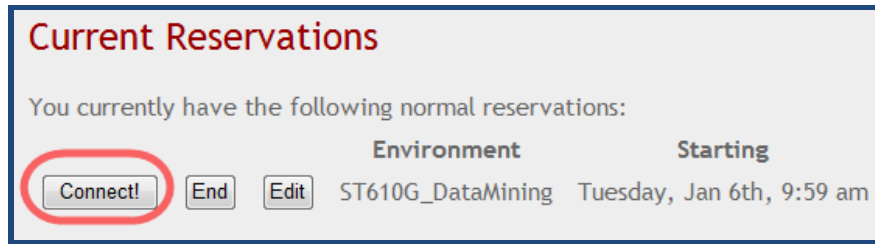
- (3a) Log in using your UnityID and password if you haven't already done so.

Select your image and time

- (4) Select the environment called 'ST610G_DataMining '
Choose the time 'Now'



(5) When you see the "Connect!" button, click it.



(6) Click "Get RDP file" (Remote Desktop Protocol) AND note the Password (case sensitive!) (You may get some popup security approval windows)

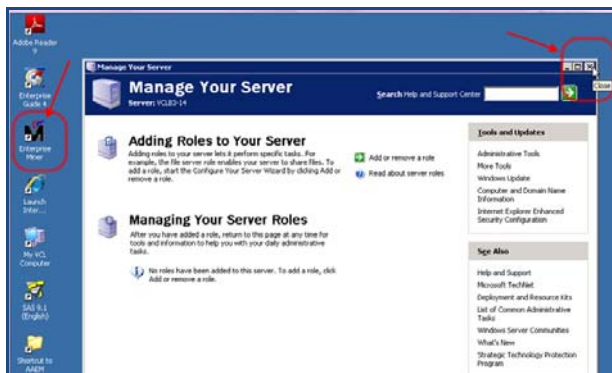


Log into the VCL machine

(7) When the "Log On to Windows" window appears, enter the password you were given.



[when you see a "Manage your server" window, close it]



VCL is accessed through the window you now see on your computer. It may be less confusing if you maximize that window. There is a shortcut to the data sets (AAEM), SAS, Adobe, and most importantly EM (Enterprise Miner).

Log into SAS Enterprise Miner

(8) Click the EM icon to open it.

Username is sasdemo with password sas12345

You MUST also click personal workstation



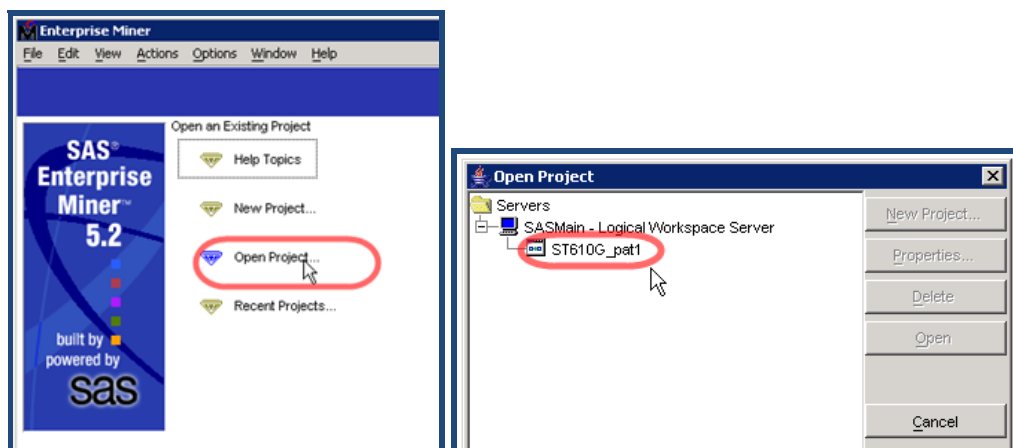
You are now ready to use Enterprise Miner. Note that up to now, the steps we have had to go through are a function of the NCSU environment and would not be needed in another installation.

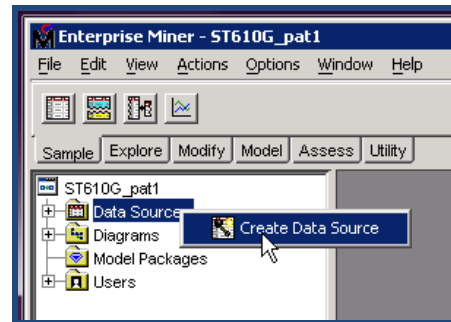
Use Enterprise Miner

(9) Create a new project or open an existing one.

I have created a **project ST610G_part1** for us to use so you can choose

"Open Project" and that project should appear in your Enterprise Miner window.

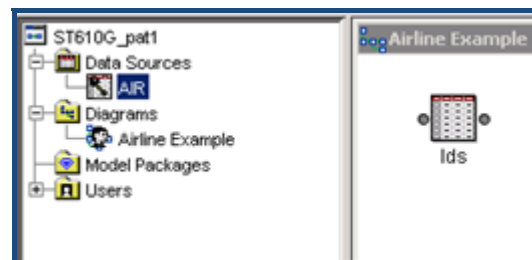




(10) Right click on "Data Sources" in upper left panel

And then "Create Data Source" from which step you can follow a wizard to create the data and give its variables their properties (e.g. "target")

*** I have already done this for the AIR data so you will see that data source in our first example. You do not have to create it.



(11) Right click "Diagrams" and then select "create diagram".

*** I have also done this so you should see a diagram called "Airline Example" which you can click on to start our first demo.

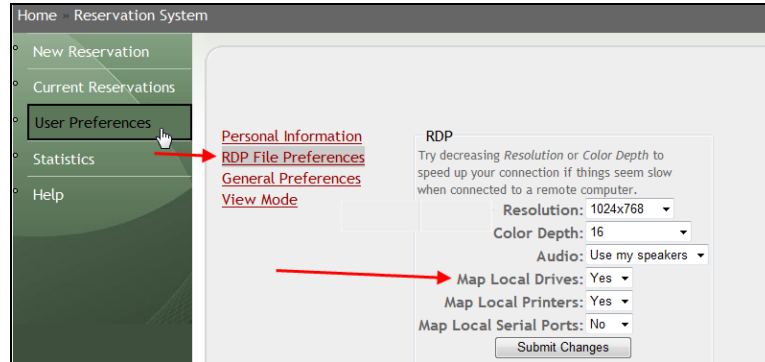
TIPS

VCL

(1) Don't see your local drives?

Click on User Preferences -> RDP File Preferences

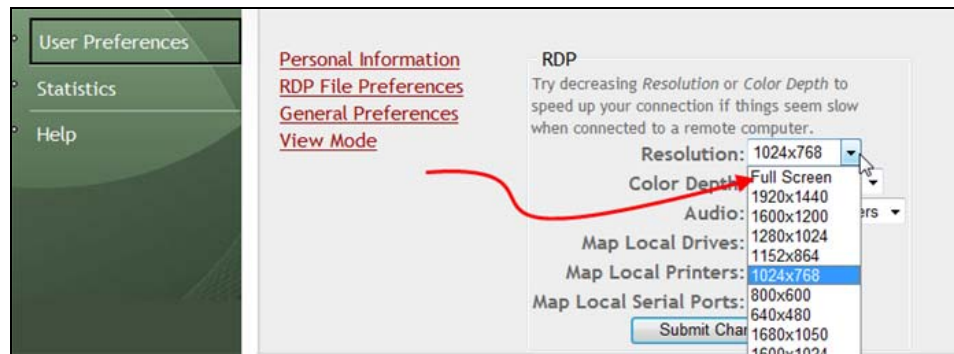
Make sure Map Local Drives is set to YES



(2) Can't get the remote desktop screen to go Full Screen?

Click on User Preferences -> RDP File Preferences

Make sure Resolution is set to Full Screen



Reservation & Logging into Windows

(1) Reservation stuck at 1 minute?

Click on Pending... & see what the status of your image load is

	Est/Act	Total
computer status check(4)	0:10/0:08	0:08
confirming image exists(22)	0:04/0:03	0:11
starting install process(6)	0:01/0:00	0:11
rebooting node for reinstall(15)	1:40/0:14	0:25
starting reload process(21)	0:27	
image loading(12)	2:55	
running post configuration(9)	11:33	
resource ready(43)	0:00	
adding user account(41)	0:18	
ready for Connect(18)	0:00	

You'll see here if one of the steps failed and it had to begin again with the load.

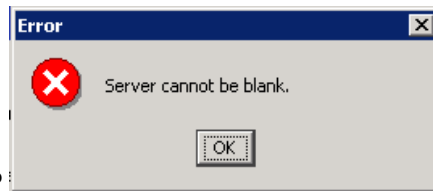
(2) Errors on Windows login?

- Make sure Cap Lock is not on; unityID & password are case sensitive
- Use your NCSU UnityID, but **not** your unity password. Use that one time-password given to you on the connect page.

Enterprise Miner

(1) Can't log into Enterprise Miner

Are you typing in *sasdemo* & *sas12345* for username & password?



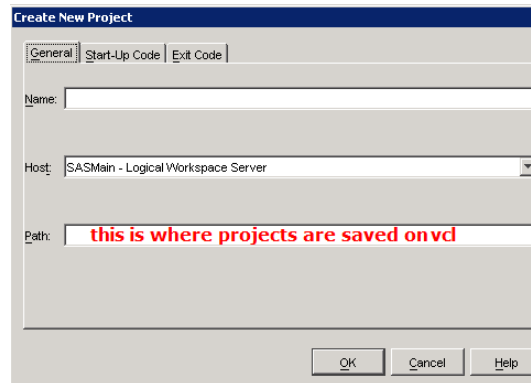
(2) Getting the following error?

click next to Personal Workstation

Personal Workstation

(3) Don't see your work from the last session?

- Only the professor's work is saved on the image.
- You must manually move your project work onto and off of the vcl image
- Projects on VCL are stored along the path originally specified when the project



was created

- Look at project **Properties** to see where that is if you don't know
- You can copy projects off of VCL and onto your own personal space

